

Mirsal II

INSTALLING A DIGITAL CERTIFICATE MANUAL

Creation Date : 25 February 2008
Last Updated : 7 April 2008
Version: : 0.1

Download Digital Signature from PC which was used to submit the request.

If user is using the same PC which was used to submit the Digital Signature request then skip step 2 and 3.

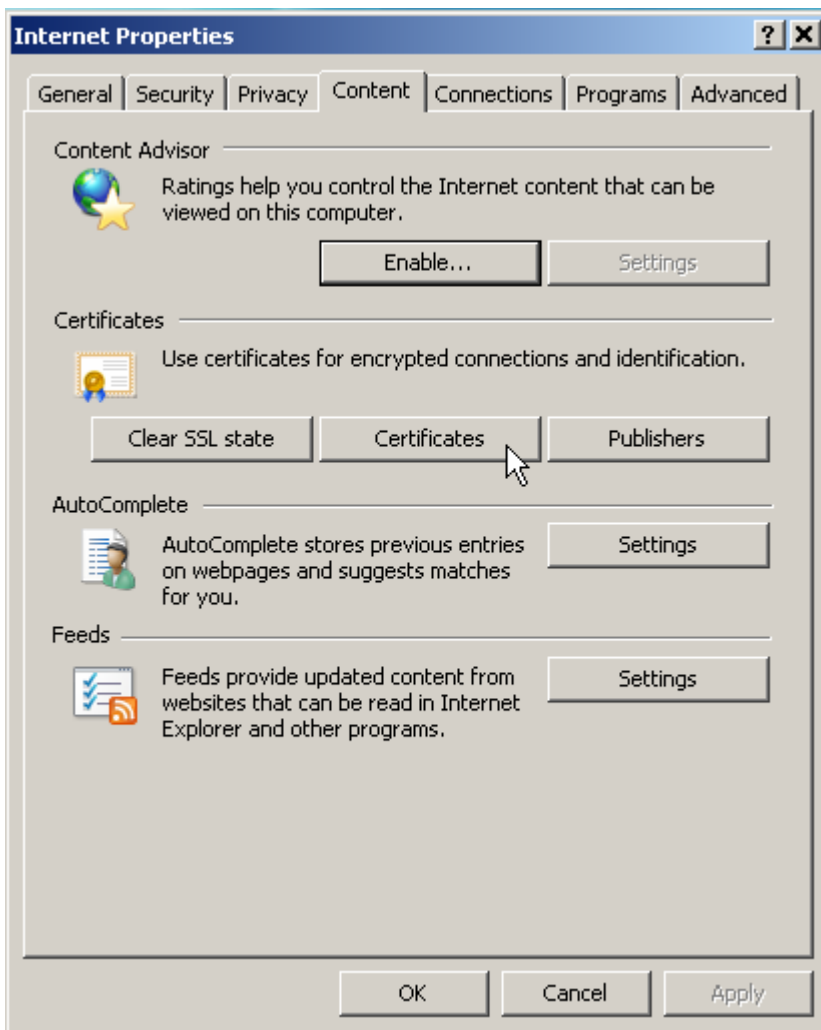
1. Download Digital Signature

To download digital signature use the link sent by etisalat, enter the reference number and follow the download instructions.

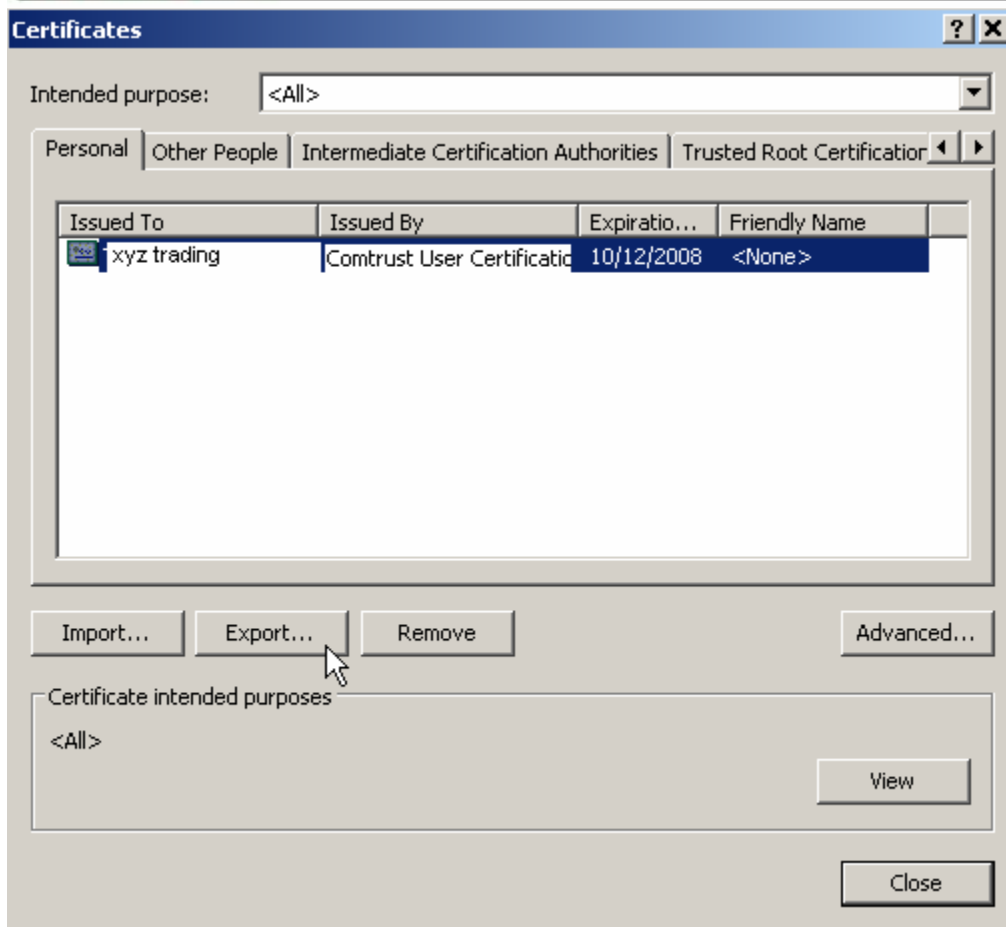
If DS is required to transfer to another PC then after download export the DS.

2. Export Digital Signature with Private Key

To export DS perform the following steps.



Select **Content** tab and click on **Certificates** button.



Select digital signature issued by **Comtrust** and click on Export button



Certificate Export Wizard

Export Private Key
You can choose to export the private key with the certificate.

Private keys are password protected. If you want to export the private key with the certificate, you must type a password on a later page.

Do you want to export the private key with the certificate?

Yes, export the private key

No, do not export the private key

Note: The associated private key is marked as not exportable. Only the certificate can be exported.

< Back Next > Cancel

Select option **Yes, export the private key**, then set the password and follow the remaining export wizard. (Choose all remaining default options)

3. Install Digital Signature on other PC

To install DS perform the following steps.

Certificate Import Wizard

Welcome to the Certificate Import Wizard

This wizard helps you copy certificates, certificate trust lists, and certificate revocation lists from your disk to a certificate store.

A certificate, which is issued by a certification authority, is a confirmation of your identity and contains information used to protect data or to establish secure network connections. A certificate store is the system area where certificates are kept.

To continue, click Next.

< Back Next > Cancel

Certificate Import Wizard [X]

File to Import
Specify the file you want to import.

File name:

Note: More than one certificate can be stored in a single file in the following formats:

- Personal Information Exchange- PKCS #12 (.PFX, .P12)
- Cryptographic Message Syntax Standard- PKCS #7 Certificates (.P7B)
- Microsoft Serialized Certificate Store (.SST)

Certificate Import Wizard [X]

Password
To maintain security, the private key was protected with a password.

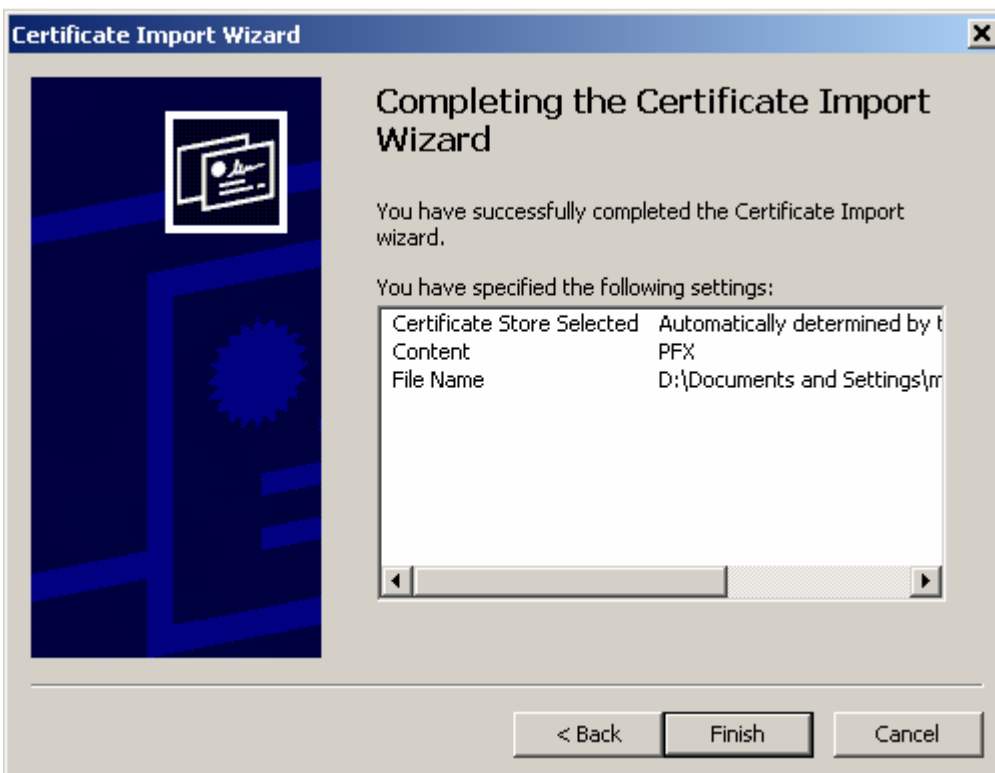
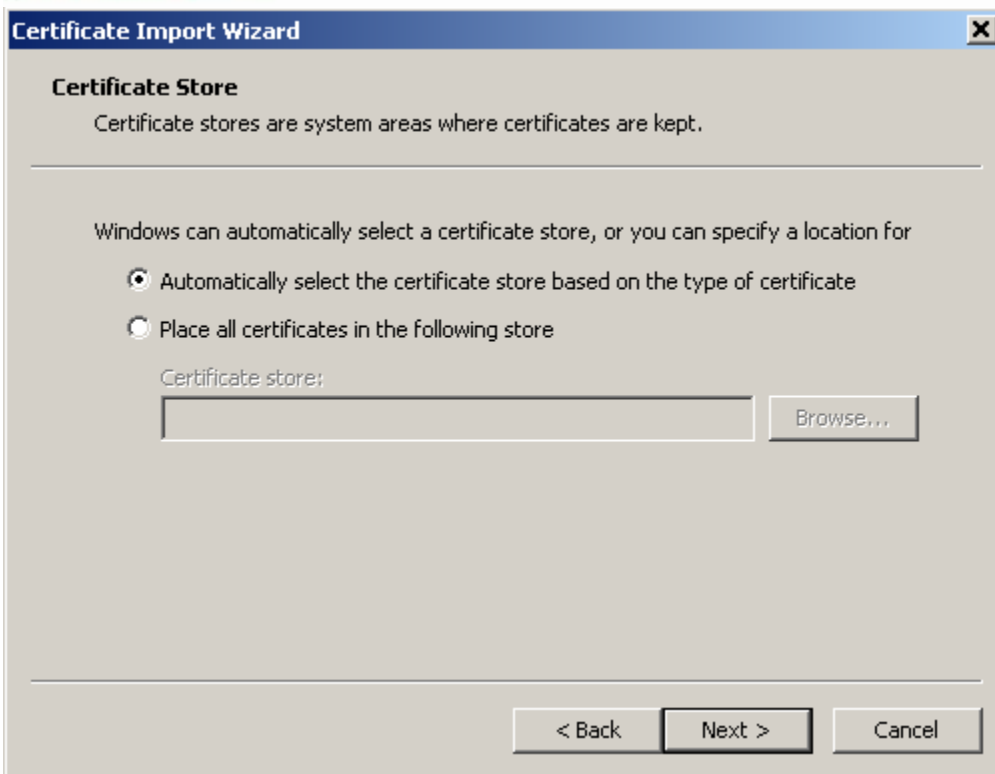
Type the password for the private key.

Password:

Enable strong private key protection. You will be prompted every time the private key is used by an application if you enable this option.

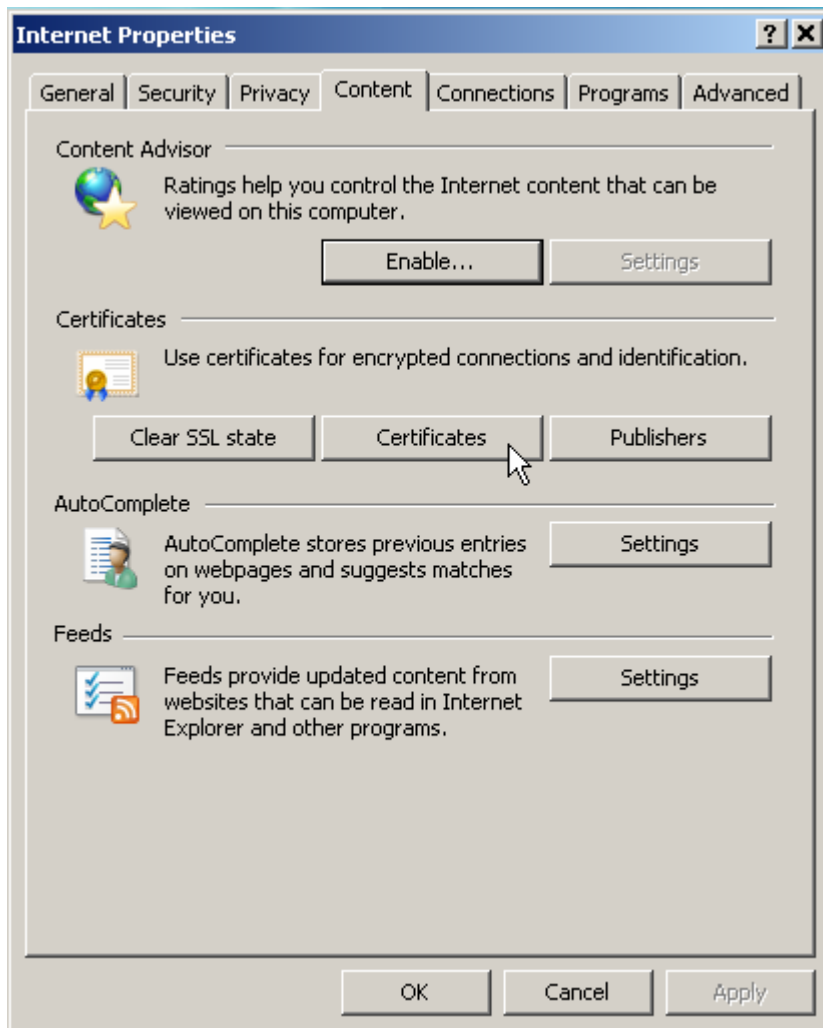
Mark this key as exportable. This will allow you to back up or transport your keys at a later time.

Enter password and click on **Next** button

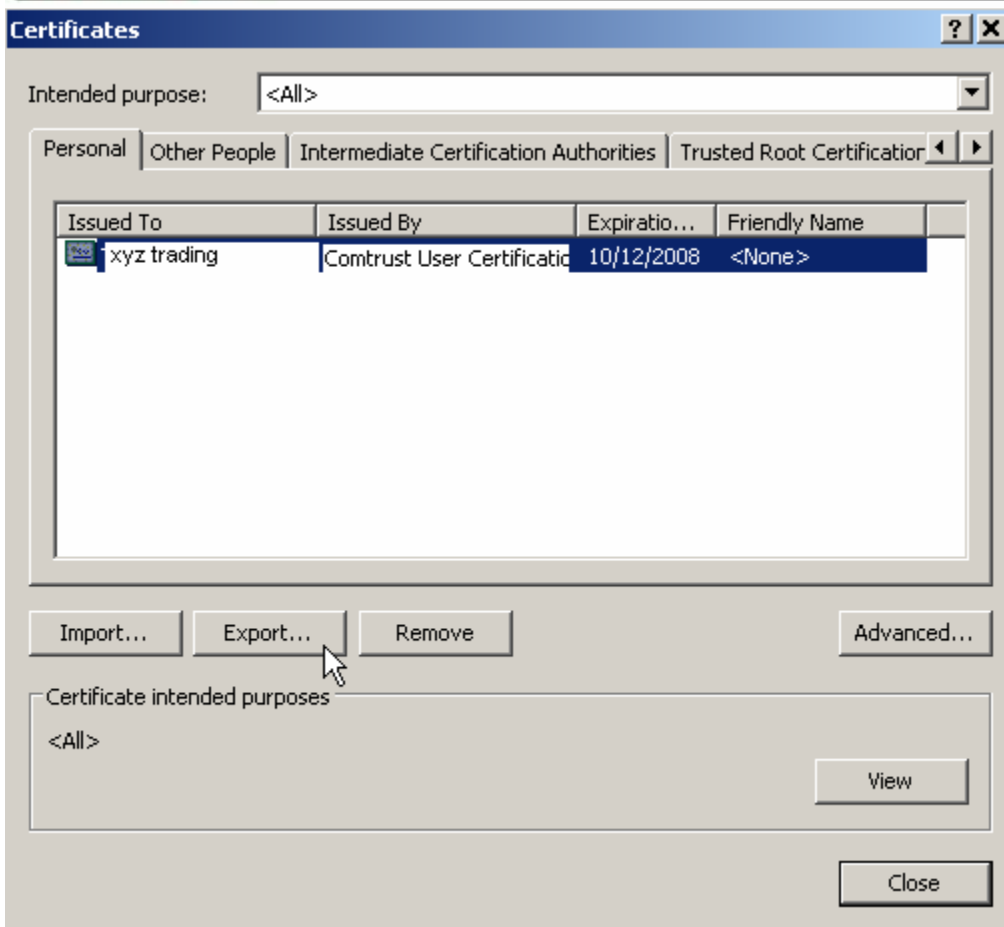


4. Export Digital Signature in .cer format

Export DS in .cer format **zip the file** and then send to Dubai Customs along with username and email id to upload the signature.



Select **Content** tab and click on **Certificates** button.



Select digital signature issued by Comtrust and click on Export button



Certificate Export Wizard [X]

Export Private Key
You can choose to export the private key with the certificate.

Private keys are password protected. If you want to export the private key with the certificate, you must type a password on a later page.

Do you want to export the private key with the certificate?

Yes, export the private key

No, do not export the private key

Note: The associated private key is marked as not exportable. Only the certificate can be exported.

< Back Next > Cancel

Certificate Export Wizard [X]

Export File Format
Certificates can be exported in a variety of file formats.

Select the format you want to use:

DER encoded binary X.509 (.CER)

Base-64 encoded X.509 (.CER)

Cryptographic Message Syntax Standard - PKCS #7 Certificates (.P7B)

Include all certificates in the certification path if possible

Personal Information Exchange - PKCS #12 (.PFX)

Include all certificates in the certification path if possible

Enable strong protection (requires IE 5.0, NT 4.0 SP4 or above)

Delete the private key if the export is successful

< Back Next > Cancel

Certificate Export Wizard [X]

File to Export
Specify the name of the file you want to export

File name:

Enter file name and select file path.

Certificate Export Wizard [X]

Completing the Certificate Export Wizard

You have successfully completed the Certificate Export wizard.

You have specified the following settings:

File Name	D:\Doc
Export Keys	No
Include all certificates in the certification path	No
File Format	DER Er